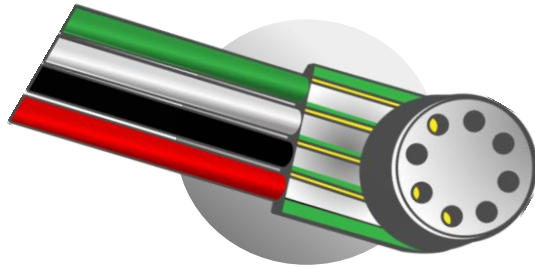


## Very small pressure sensor for harsh environment standard Temperature - Flat

1,55 mm up to 100C°

MP-1.55-TIG-YYY-A-ST-FLAT



### MODEL DEFINITION

**TIG** : Inconel tube with grid is the standard product  
**YYY**: pressure range in PSI (030, 060, 100)  
**A**: absolute pressure measurement  
**ST** : standard temperature up to 100C°  
**Options** : special tube length, material and grid shape also available on request

### WIRE COLOR CODE

BLACK	Input -
RED	Input +
WHITE	Output -
GREEN	Output +

### OVERVIEW

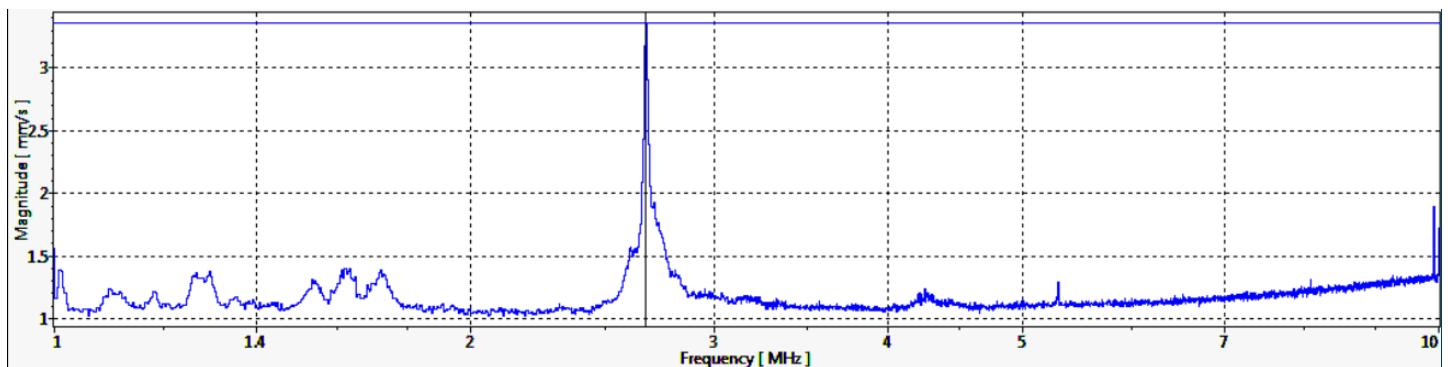
- L x W : 1.55mm x 3mm
- From 30 to 100 psi Absolute pressure sensor
- Wide temperature range up to 100C°
- Harsh environment
- Customized solution possible
- mVolt output
- Highest resonance frequency on the market
- Amplification can be done for a special request.

### APPLICATIONS

- Instrumentation (ie: Automotive, ...)
- Aerodynamic testing (ie: wind tunnel)
- Industrial process monitoring
- Pumps
- Biomedical
- Oil and gas
- ...

### Resonance frequency

- Highest resonance frequency of 2.7 MHz of the market
- The tests have been done on a Polytec MSA-500 using Scanning laser-Doppler vibrometry.



## PART NUMBER

MP-1.55-TIG-YYY-A-ST-FLAT

WxL	1.55x3mm		
Pressure range <sup>1</sup>	0-2 bar	0-4 bar	0-7 bar
	0-30 psi	0-60 psi	0-100 psi
Max nominal pressure	2 bar	4 bar	7 bar
	30 psi	60 psi	100 psi
Proof pressure <sup>1</sup>	3 * nominal		
Burst pressure <sup>1</sup>	5 * nominal		
Bridge resistance	6.2 kΩ typical / (5-7 kΩ)		
Vout span <sup>4</sup>	100 mV typical / (65-135mV)		
Excitation voltage	5V		
Tmax <sup>2</sup>	100 Celsius (ST)		
Accuracy <sup>3</sup>	0.25% @ FS		
Signal amplification	None		

### Remark:

- All sensors are provided with a control sheet given pressure level versus mVolt @ 25C° under a supply voltage of 5 Volt.
- Temperature measurement/compensation available. [See our tutorial on our website.](#)

- 1 | Absolute pressure
- 2 | TMCL qualification tests – JEDEC JESD22-A104  
« temperature cycling » @ Tmax
- 3 | @25 Celsius – Please contact us for more information
- 4 | Amplification can be done for a special request

## CONTACT

**Operational Headquarter:** Rue des ormes 151, B-4800 Lambermont, BELGIUM

**TEL:** +32 87 70 96 69

**Email:** sales@sensorade.be