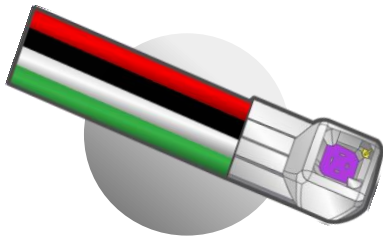


Ultra small pressure sensor for harsh environment standard Temperature - Flat

1,25 mm up to 100C°

MP-1.25-WOT-YYY-A-ST-FLAT-XX



MODEL DEFINITION

WOT : without tube is the standard product

YYY: pressure range in PSI (030, 060, 100)

A: absolute pressure measurement

ST : standard temperature up to 100C°

FLAT : flat shape

XX: 00: Unshielded wires

01: Shielded wire

WIRE COLOR CODE

| | |
|-------|----------|
| BLACK | Input - |
| RED | Input + |
| WHITE | Output - |
| GREEN | Output + |

OVERVIEW

- W x L x H (Max): 1.25mm x 2.45mm x 1.5 mm
 - From 30 to 100 psi Absolute pressure sensor
 - Wide temperature range up to 100C°
 - Harsh environment
 - Customized solution possible
 - mVolt output
 - Highest resonance frequency on the market
 - Amplification can be done for a special request
 - Unshielded wires : UAA-3601-WH/...-BK/...-RD/...-GR
- Or
- Shielded wire: TAU-3607.04
- Wire length: 1m

APPLICATIONS

- Instrumentation (ie: Automotive, ...)
- Aerodynamic testing (ie: wind tunnel)
- Industrial process monitoring
- Pumps
- Biomedical
- Oil and gas
- ...

Resonance frequency

- Highest resonance frequency of 2.7 MHz of the market
- The tests have been done on a Polytec MSA-500 using Scanning laser-Doppler vibrometry.

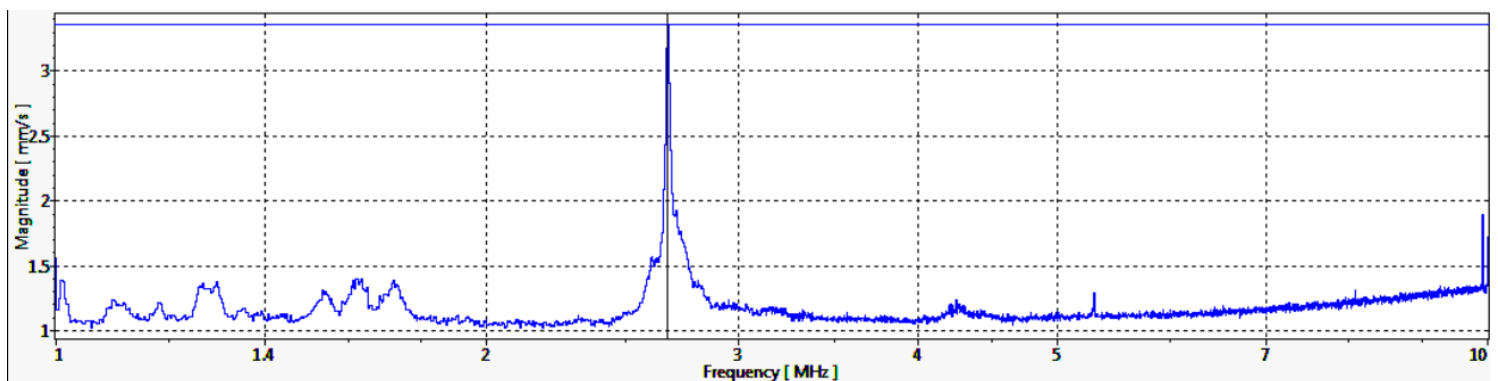


Figure 1: Result for the 30 PSI MEMS absolute pressure sensors

PART NUMBER

MP-1.25-WOT-YYY-A-ST-FLAT-XX

| | | | |
|-----------------------------|-----------------------------|----------|-----------|
| WxL | 1.25x2.45mm | | |
| Pressure range ¹ | 0-2 bar | 0-4 bar | 0-7 bar |
| | 0-30 psi | 0-60 psi | 0-100 psi |
| Max nominal pressure | 2 bar | 4 bar | 7 bar |
| | 30 psi | 60 psi | 100 psi |
| Proof pressure ¹ | 3 * nominal | | |
| Burst pressure ¹ | 5 * nominal | | |
| Bridge resistance | 6.2 kΩ typical / (5-7 kΩ) | | |
| Vout span ⁴ | 100 mV typical / (65-135mV) | | |
| Excitation voltage | 5V | | |
| Tmax ² | 100 Celsius (ST) | | |
| Accuracy ³ | 0.5% @ FS | | |
| Signal amplification | None | | |

Remark:

- All sensors are provided with a control sheet given pressure level versus mVolt @ 25C° under a supply voltage of 5 Volt.
- Temperature measurement/compensation available. [See our tutorial on our website.](#)

- 1 | Absolute pressure
- 2 | TMCL qualification tests – JEDEC JESD22-A104
« temperature cycling » @ Tmax
- 3 | @25 Celsius – Please contact us for more information
- 4 | Amplification can be done for a special request

CONTACT

Operational Headquarter: Rue des Ormes 151, B-4800 Lambermont, BELGIUM

TEL: +32 87 70 96 69

Email: sales@sensorade.be