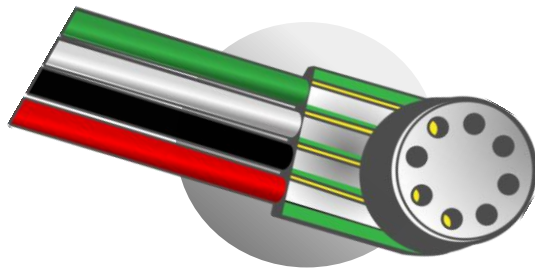


Very small pressure sensor for harsh environment standard Temperature - Flat

1,55 mm up to 100C°

MP-1.55-TIG-YYY-A-ST-FLAT-XX



MODEL DEFINITION

TIG : Inconel tube with grid is the standard product
YYY: pressure range in PSI (030, 060, 100)
A: absolute pressure measurement
ST : standard temperature up to 100C°
FLAT : flat shape
XX: **00**: Unshielded wires
01: Shielded wire

WIRE COLOR CODE

BLACK	Input -
RED	Input +
WHITE	Output -
GREEN	Output +

OVERVIEW

- L x W x H: 1.55mm x 3mm X 1.5mm
- From 30 to 100 psi Absolute pressure sensor
- Wide temperature range up to 100C°
- Harsh environment
- Customized solution possible
- mVolt output
- Highest resonance frequency on the market
- Amplification can be done for a special request
- Unshielded wires : UAA-3601-WH/...-BK/...-RD/...-GR
 Or
 Shielded wire: TAU-3607.04
- Wire length: 1m

APPLICATIONS

- Instrumentation (ie: Automotive, ...)
- Aerodynamic testing (ie: wind tunnel)
- Industrial process monitoring
- Pumps
- Biomedical
- Oil and gas
- ...

Resonance frequency

- Highest resonance frequency of 2.7 MHz of the market
- The tests have been done on a Polytec MSA-500 using Scanning laser-Doppler vibrometry.

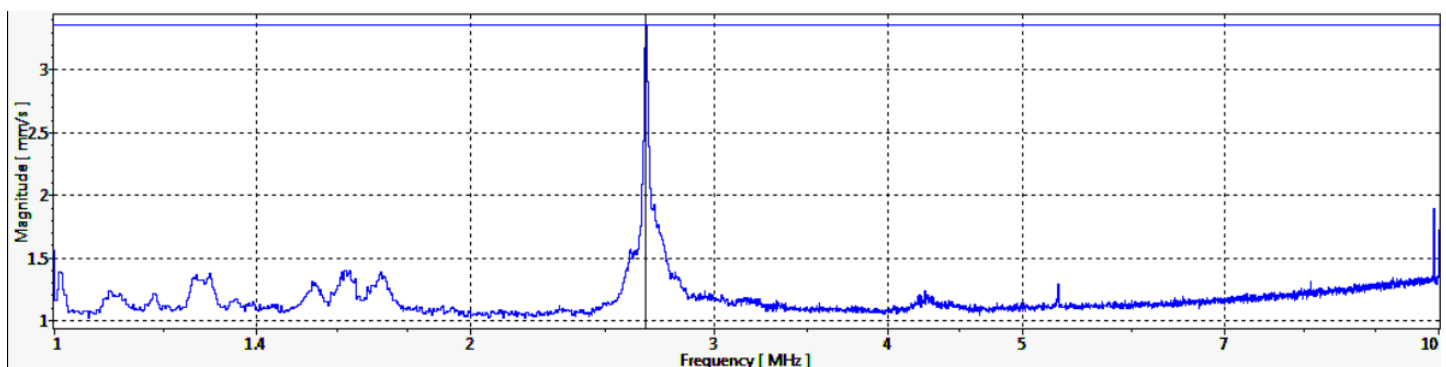


Figure 1: Result for the 30 PSI MEMS absolute pressure sensors

PART NUMBER

MP-1.55-TIG-YYY-A-ST-FLAT-XX

WxL	1.55x3mm		
Pressure range ¹	0-2 bar	0-4 bar	0-7 bar
	0-30 psi	0-60 psi	0-100 psi
Max nominal pressure	2 bar	4 bar	7 bar
	30 psi	60 psi	100 psi
Proof pressure ¹	3 * nominal		
Burst pressure ¹	5 * nominal		
Bridge resistance	6.2 kΩ typical / (5-7 kΩ)		
Vout span ⁴	100 mV typical / (65-135mV)		
Excitation voltage	5V		
Tmax ²	100 Celsius (ST)		
Accuracy ³	0.5% @ FS		
Signal amplification	None		

Remark:

- All sensors are provided with a control sheet given pressure level versus mVolt @ 25C° under a supply voltage of 5 Volt.
- Temperature measurement/compensation available. [See our tutorial on our website.](#)

- 1 | Absolute pressure
- 2 | TMCL qualification tests – JEDEC JESD22-A104
« temperature cycling » @ Tmax
- 3 | @25 Celsius – Please contact us for more information
- 4 | Amplification can be done for a special request

CONTACT

Operational Headquarter: Rue des ormes 151, B-4800 Lambermont, BELGIUM

TEL: +32 87 70 96 69

Email: sales@sensorade.be