

## Very small pressure sensor for harsh environment High Temperature

1,55 mm up to 185C°

MP-1.55-XXX-YYY-A-ZZ-XX



### MODEL DEFINITION

**XXX:** TIG: Inconel tube with grid is the standard product  
 TSG: Stainless steel tube with grid  
 TIO: Inconel tube (open configuration)  
 TSO: Stainless steel (open configuration)  
**YYY:** pressure range in PSI (018, 030, 060, 100)  
**A:** absolute pressure measurement  
**ZZ:** ST: standard temperature up to 100C°  
 HT: high temperature up to 185C°  
**XX:** 00: Unshielded wires  
 01: Shielded wire

### WIRE COLOR CODE

BLACK	Input -
RED	Input +
WHITE	Output -
GREEN	Output +

### OVERVIEW

- Outer diameter 1.55 mm
- From 18 to 100 PSI Absolute pressure sensor
- Wide temperature range up to 185C°
- Harsh environment
- Customized solution possible
- mVolt output
- Highest resonance frequency on the market
- Amplification can be done for a special request
- Unshielded wires : UAA-3601-WH/...-BK/...-RD/...-GR  
 Or  
 Shielded wire: TAU-3607.04
- Wire length: 1m

### APPLICATIONS

- Instrumentation (ie: Automotive, ...)
- Aerodynamic testing (ie: wind tunnel)
- Industrial process monitoring
- Pumps
- Biomedical
- Oil and gas
- ...

### Resonance frequency

- Highest resonance frequency of 2.7 MHz of the market
- The tests have been done on a Polytec MSA-500 using Scanning laser-Doppler vibrometry.

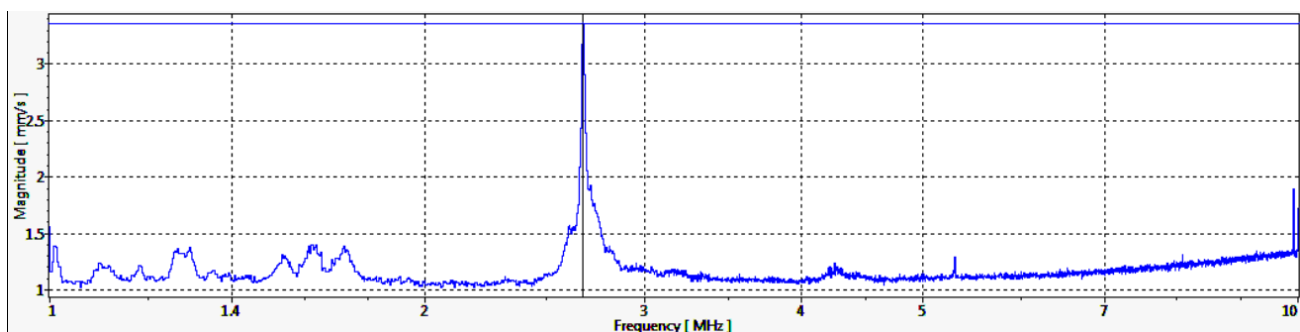


Figure 1: Result for the 30 PSI MEMS absolute pressure sensors

## PART NUMBER

MP-1.55-XXX-YYY-A-ZZ-XX

Outer diameter	1.55mm			
Pressure range <sup>1</sup>	0-1.2 bar	0-2 bar	0-4 bar	0-7 bar
	0-18 psi	0-30 psi	0-60 psi	0-100 psi
Max nominal pressure	1.2 bar	2 bar	4 bar	7 bar
	18 psi	30 psi	60 psi	100 psi
Proof pressure <sup>1</sup>	3 * nominal			
Burst pressure <sup>1</sup>	5 * nominal			
Bridge resistance	6.2 kΩ typical / (5-7 kΩ)			
Vout span <sup>4</sup>	100 mV typical / (65-135mV)			
Excitation voltage	5V			
Tmax <sup>2</sup>	100 Celsius (ST) - 185 Celsius (HT)			
Accuracy <sup>3</sup>	0.5% @ FS			
Signal amplification	None			

### Remark:

- All sensors are provided with a control sheet given pressure level versus mVolt @ 25C° under a supply voltage of 5 Volt.
- Temperature measurement/compensation available. [See our tutorial on our website.](#)

- 1 | Absolute pressure
- 2 | TMCL qualification tests – JEDEC JESD22-A104  
« temperature cycling » @ Tmax
- 3 | @25 Celsius – Please contact us for more information
- 4 | Amplification can be done for a special request

## CONTACT

**Operational Headquarter:** Rue des Ormes 151, B-4800 Lambermont, BELGIUM

**TEL:** +32 87 70 96 69

**Email:** sales@sensorade.be